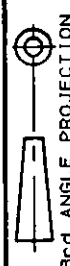


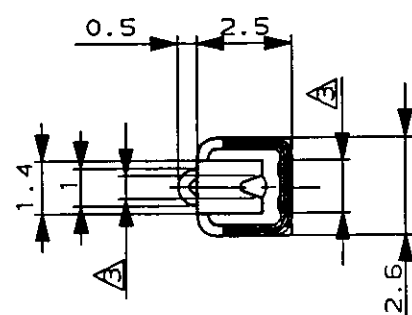
NUMBER
C-173630



METRIC

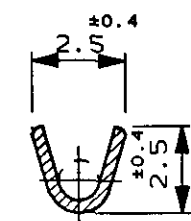
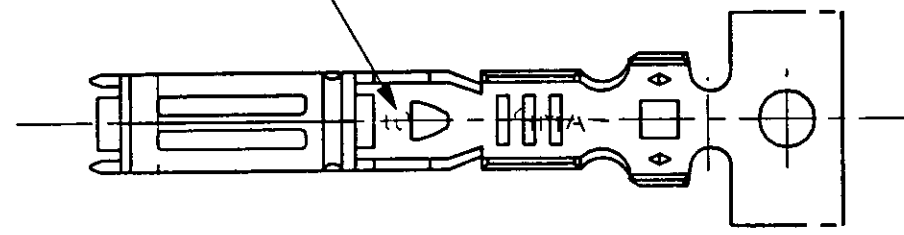
DIMENSIONS IN MILLIMETERS. DO NOT SCALE PRINT

PRINT DIST

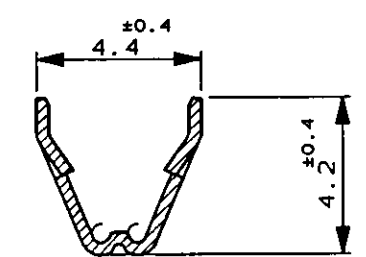


WIRE RANGE ID MARK
("S" SIZE MARK)
(STAMPED ON BOTTOM)

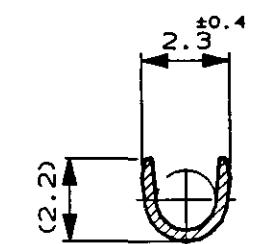
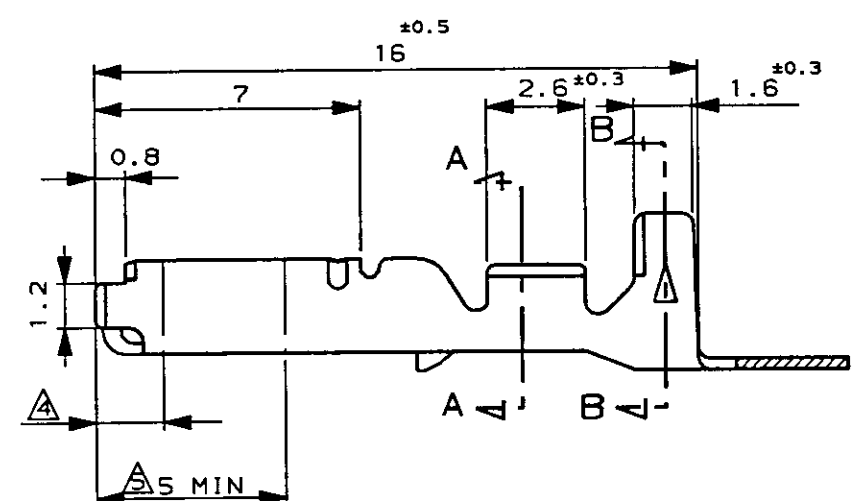
端子識別マーク "S"
(底面に刻印)



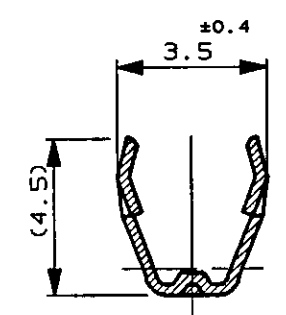
断面 A-A
SECT A-A



断面 B-B
SECT B-B



断面 A-A
SECT A-A
(175026のみ適用)
(ONLY 175026)



断面 B-B
SECT B-B
(175026のみ適用)
(ONLY 175026)

- 注:
- 1 製品規格; 108-5216, 108-5231, 108-5264
 - 2 取付通用規格; 114-5091
 - △ 部分金めつき (接触面のみ)
 - △ 識別用金めつき (全周)
 - △ 部分金めつき (両側のみ)

- NOTE:
- 1 PRODUCT SPEC; 108-5216, 108-5231, 108-5264
 - 2 APPLICATION SPEC; 114-5091
 - △ SELECTIVE GOLD PLATING (ONLY CONTACT SIDE)
 - △ GOLD PLATING FOR DISCERNMENT (ALL AROUND)
 - △ SELECTIVE GOLD PLATING (ONLY BOTH SIDES OF THE BOX)

	部分金めつき SELECTIVE GOLD	実鋼 板厚0.3 BRASS t0.3	1-173630-2
175026-7	部分金めつき SELECTIVE GOLD	リン青銅 板厚0.3 PHOS BRO. t0.3	173630-7
175026-6	錫めつき済 PRE-TINNED	リン青銅 板厚0.3 PHOS BRO. t0.3	173630-6
175026-1	部分金めつき SELECTIVE GOLD	実鋼 板厚0.3 BRASS t0.3	173630-2
	錫めつき済 PRE-TINNED	実鋼 板厚0.3 BRASS t0.3	173630-1
パラ端子型番 (L/P PART NUMBER)	仕上 (FINISH)	材料 (MATERIAL)	型番 (PART NUMBER)

Copyright ©1987年 AMP (Japan), LTD. ALL RIGHTS RESERVED.		Copyright ©1987 AMP (Japan), LTD. ALL RIGHTS RESERVED.		AMP 日本エー・エム・ピー株式会社 Tokyo, Japan	
F	ADDED 追加 1- -2 FJ00-1985-95	T.S	M.O	3/16/85	
E	変更 (J-10171)	T.S	Y.M	10/20/89	
D	変更 (J-10781)	T.S	Y.M	3/1/89	
C	変更 (J-10229)	T.S	Y.M	2/20/87	
B	変更 (J-9953)	T.S	Y.M	9/28/87	
LTR	変更 (REVISION RECORD)	DR	CHK	DATE	
材料 (MATERIAL) SEE TABLE 表参照		仕上 (FINISH) SEE TABLE 表参照		名称 (NAME) .070 SERIES RECEPTACLE CONTACT .070 シリーズ リセプタクル コンタクト	
DR. 9/28/87 T. SAGAWA		DE. 10/6/87 T. SAGAWA		一般公差 (GENERAL TOLERANCE) 0<≦ 10 : ±0.2 10<≦ 30 : ±0.25 30<≦ 100 : ±0.3 ANGLES : ±3°	
CHK. 10/6/87 Matsushima		APP. 10/7/87 M. Nozuchi		LOC 番号 (No.) B J C-173630	
				尺度 (SCALE) REV. SHEET 5-1 F 1 OF 1	

(CUSTOMER DRAWING) 参 考 図 面