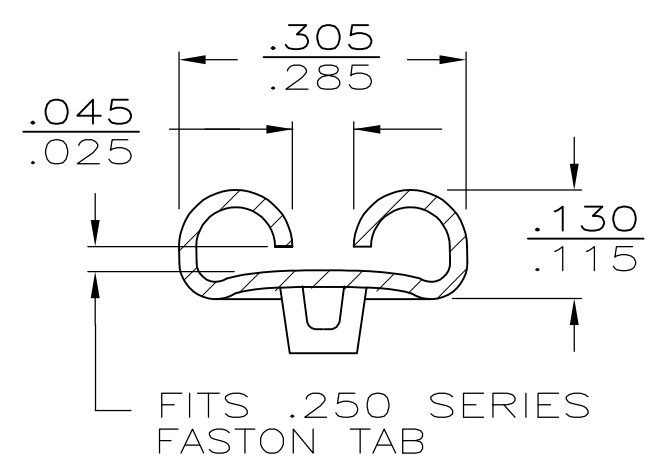
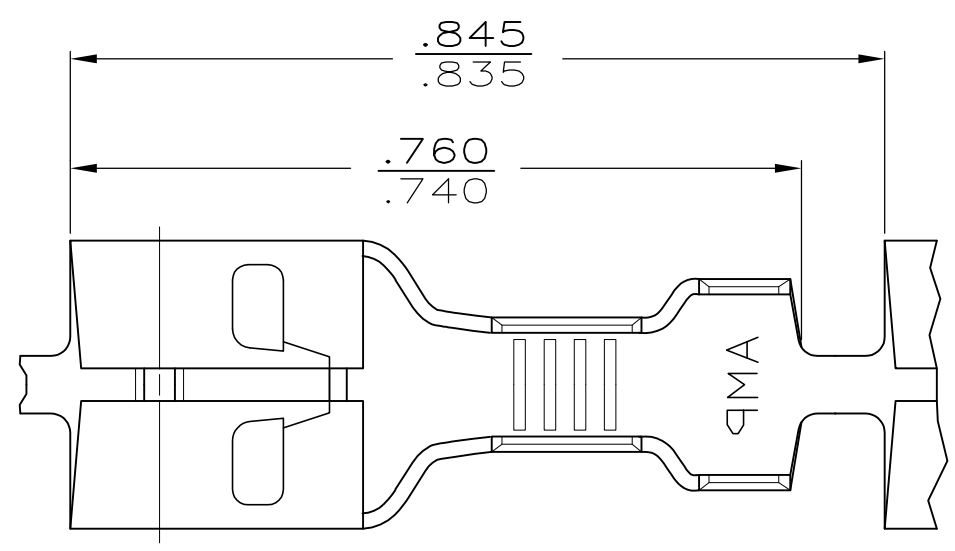


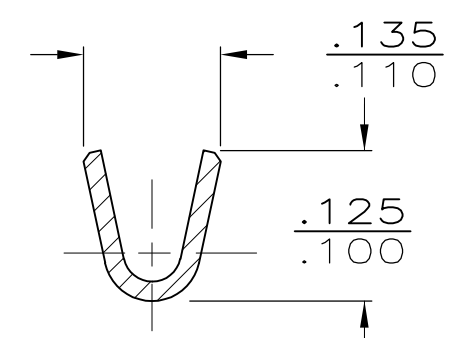
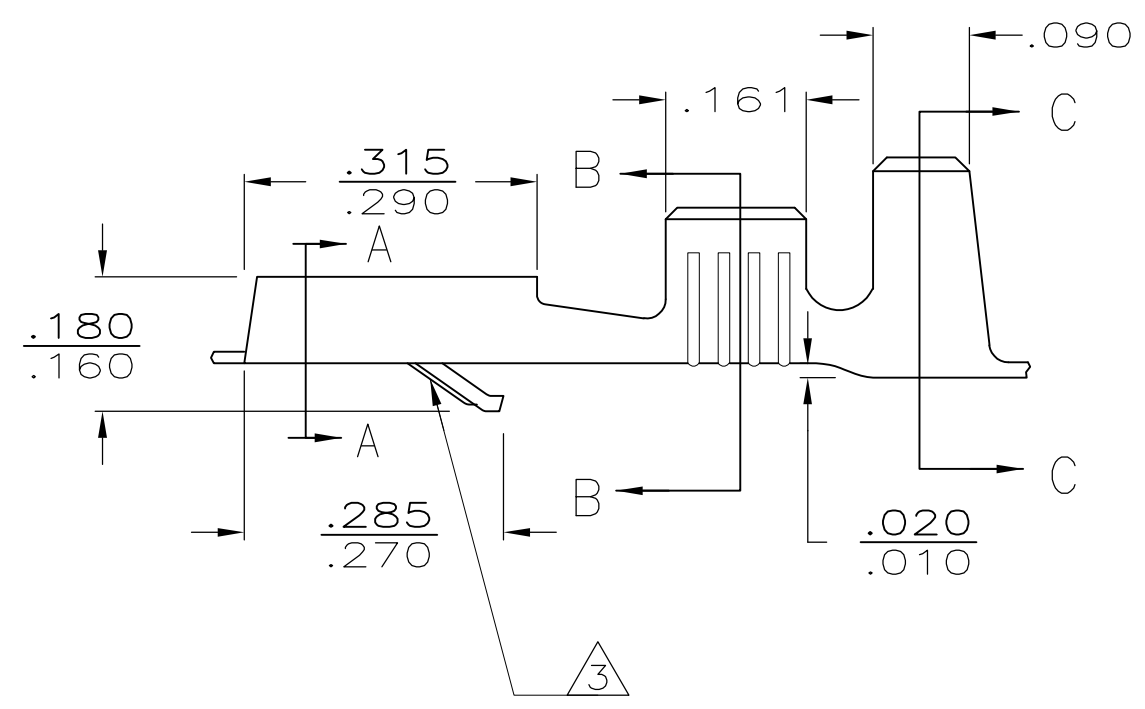
THIS DRAWING IS UNPUBLISHED. RELEASED FOR PUBLICATION
 © COPYRIGHT - By - ALL RIGHTS RESERVED.

LOC	DIST	REVISIONS					
AF	50	P	LTR	DESCRIPTION	DATE	DWN	APVD
				REVISD PER ECO-11-004820	11MAR11	RK	HMR

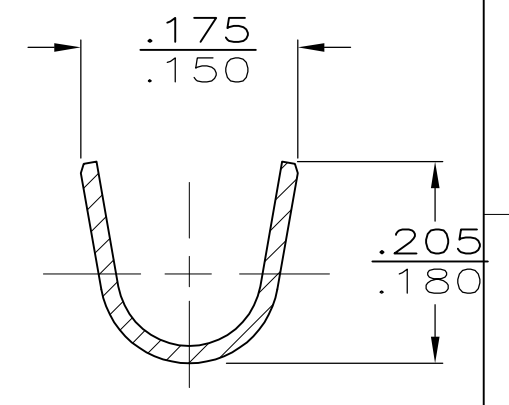
- 1 - CONTINUOUS STRIP ON REELS.
- △2 - FOREIGN PRODUCTION ONLY
- △3 - LANCE IN 1-60295-2 ONLY.
- △4 - INTERLEAVING PAPER
- △5 - PRELIMINARY - NOT FOR PRODUCTION



SECTION A-A



SECTION B-B



SECTION C-C

OBSOLETE	△4	TIN	.085-.125	22-18	.032 ±.001	△5	60295-4
	△3	TIN	.085-.125	22-18	.032 ±.001	△2	1-60295-2
	OBSOLETE	NICKEL	.085-.125	22-18	.032 ±.001		60295-3
		TIN	.085-.125	22-18	.032 ±.001		60295-2
		-	.085-.125	22-18	.032 ±.001		60295-1
		FINISH	INSULATION RANGE	WIRE SIZE	TAB THK		PART NO

THIS DRAWING IS A CONTROLLED DOCUMENT.		DWN	JR RUTH	4/28/86	TE Connectivity .250 SERIES FASTIN - FASTON RECEPTACLE							
DIMENSIONS: INCHES		CHK	G YETTER	4/28/86								
TOLERANCES UNLESS OTHERWISE SPECIFIED:		APVD	R KUZO	4/28/86								
0 PLC ± - 1 PLC ± - 2 PLC ± - 3 PLC ± .015 4 PLC ± - ANGLES ± -		PRODUCT SPEC		NAME								
MATERIAL	.012 BRASS	FINISH		SEE ABOVE	SIZE	A3	CAGE CODE	00779	DRAWING NO	C-60295	RESTRICTED TO	-
CUSTOMER DRAWING					SCALE	1:1	SHEET	1 OF 1	REV	AH1		