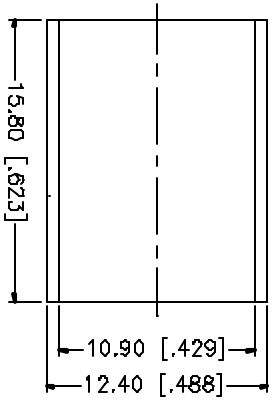
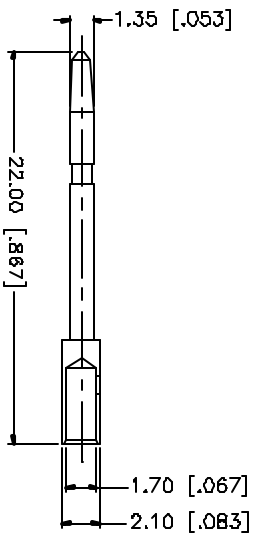
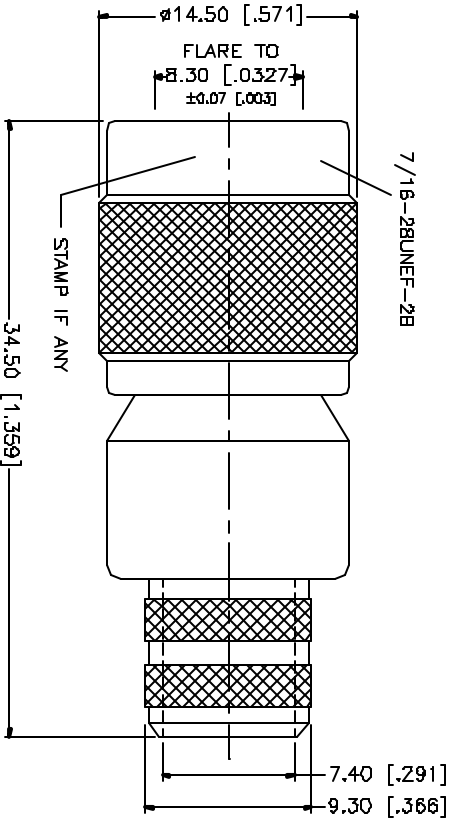
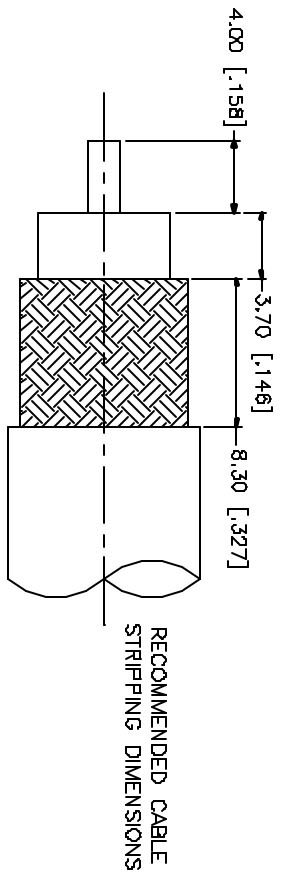


REV.	DATE	DESCRIPTION
NC	08/15/04	INITIAL RELEASE



- CRIMP NOTES:
1. CRIMPED FERRULE HEX CRIMP SIZE .429"
 2. CRIMPED CONTACT PIN HEX CRIMP SIZE .068"

QTY	FINISH	MATERIAL	DESCRIPTION
1	NICKEL	BRASS	BODY
1	NATURAL	TEFLON	INSULATOR
1	GOLD	BRASS	CONTACT PIN
1	NICKEL	COPPER	FERRULE

APPROVALS	DATE	PART DESCRIPTION
DRWN G.R.S.	08/15/04	TNC CRIMP PLUG (FOR BELDEN 8213, 9230, 9292, 9011)
DHECKED		
ISSUED		
SHEET 1 OF 1		

CAD FILE	DWG. NO.	REV.	BZE	SCALE
C:/122/122499.DWG	122499.DWG	NC	A	NA

UNLESS OTHERWISE SPECIFIED DIMENSIONS ARE IN MILLIMETERS DIMENSIONS IN [] ARE IN INCHES AND FOR CUSTOMER REFERENCE ONLY.

USING CUSTOMER SPECIFIED DIMENSIONS FOR MILLIMETER DIMENSIONS.

D.5 - .8mm ± 0.20mm
 B - .30mm ± 0.05mm
 .30 - .120mm ± 0.20mm

USING CUSTOMER SPECIFIED DIMENSIONS FOR INCHES AND DIMENSIONS FOR MILLIMETERS ARE:

.020 - .315 = ± 0.007"
 .315 - 1.180 = ± 0.015"
 1.180 - 4.724 = ± 0.020"

DD NOT SCALE DRAWING

Amphenol Connex